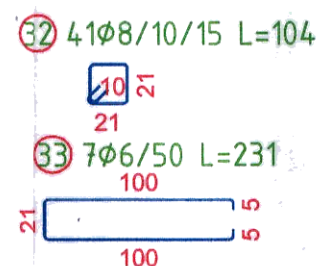
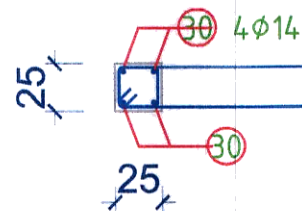
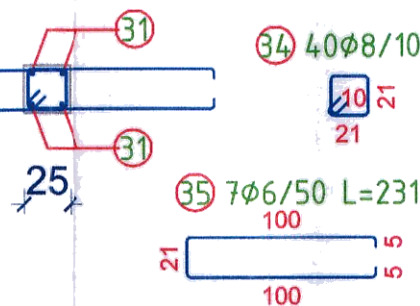
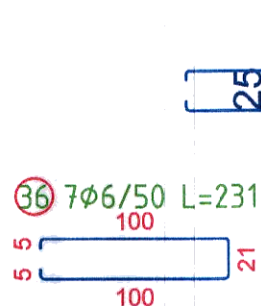


S1 (25x25 cm)
- sectiune -

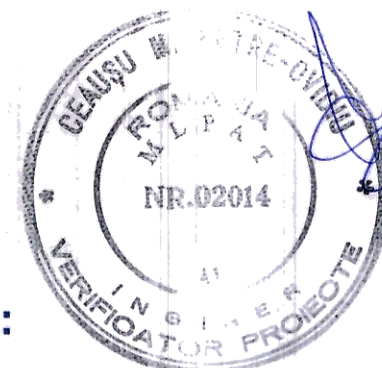


S2 (25x25 cm)
- sectiune -



MATERIALE:
- Beton:

- C16/20 in stalpi, centuri.
- Otel beton:
- PC52, OB37.



CLASA BETON

C16/20 XC1 CEM II A-S 32.5R(min. 260kg/mc) A/C:0.60

Conform P100-2013

Tc = 0,70s; ag = 0,25g

CLASA DE IMPORTANTA: III
CATEGORIA DE IMPORTANTA: C

POZITIA	N. BARE	φ [mm]	L [cm]	L. TOT [m]	GREUTATE [kg]	COD	MODEL FASONARE [cm] (conturul exterior)
30	4	14	539.0	21.56	26.04	212	
31	4	14	520.0	20.80	25.13	252	
32	41	8	104.0	42.64	16.84	595	
33	7	6	231.0	16.17	3.59	454	
34	40	8	104.0	41.60	16.43	595	
35	7	6	231.0	16.17	3.59	454	
36	7	6	231.0	16.17	3.59	414	
GREUTATE TOTALA:					95.21		

S.C. ARHIAMA STRUCTURI DESIGN S.R.L. PESTI				Beneficiar : SPITALUL DE RECUPERARE BRADET		Pr : 138
SPECIF. NUME				Proiect CONSTRUCTIE SALA VESTIARE PERSONAL SI CIRCUIT SEPARARE TRANSPORT LENJERIE		Data : 2022
PROIECTAT ing. Gheorghe PINTILIE				COMUNA BRADULET, SAT BRADETU, JUD. ARGES		Pl. nr: R15r1
DESEINAT ing. Gheorghe PINTILIE				Stalpi 25x25cm - vedere 1-1		Scara: